

ABL1 (Q252H) Kinase Assay

By Juliano Alves, Laurie Engel, Said A. Goueli, and Hicham Zegzouti, Promega Corporation

Scientific Background:

ABL1 protooncogene encodes a cytoplasmic and nuclear protein tyrosine kinase that has been implicated in processes of cell differentiation, cell division, cell adhesion, and stress response. Activity of ABL protein is negatively regulated by its SH3 domain and deletion of the SH3 domain turns ABL1 into an oncogene (1). Translocation and head-to-tail fusion of the BCR and ABL1 genes is present in many cases of chronic myelogenous leukemia (2). The DNA-binding activity of the ubiquitously expressed ABL1 tyrosine kinase is regulated by CDK1-mediated phosphorylation, suggesting a cell cycle function for ABL1.

1. Barila, D. et al: An intramolecular SH3-domain interaction regulates c-Abl activity. *Nature Genet.* 18: 280-282, 1998.
2. Goldman, J M. et al: Targeting the BCR-ABL tyrosine kinase in chronic myeloid leukemia. *New Eng. J. Med.* 344: 1084-1086, 2001.

ADP-Glo™ Kinase Assay

Description

ADP-Glo™ Kinase Assay is a luminescent kinase assay that measures ADP formed from a kinase reaction; ADP is converted into ATP, which is converted into light by Ultra-Glo™ Luciferase (Fig. 1). The luminescent signal positively correlates with ADP amount (Fig. 2) and kinase activity (Fig. 3A). The assay is well suited for measuring the effects chemical compounds have on the activity of a broad range of purified kinases—making it ideal for both primary screening as well as kinase selectivity profiling (Fig. 3B). The ADP-Glo™ Kinase Assay can be used to monitor the activity of virtually any ADP-generating enzyme (e.g., kinase or ATPase) using up to 1mM ATP.

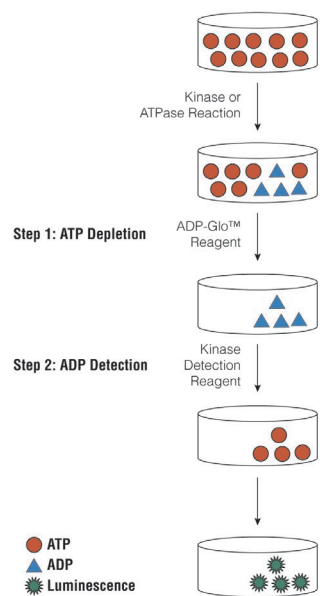


Figure 1. Principle of the ADP-Glo™ Kinase Assay. The ATP remaining after completion of the kinase reaction is depleted prior to an ADP to ATP conversion step and quantitation of the newly synthesized ATP using luciferase/luciferin reaction.

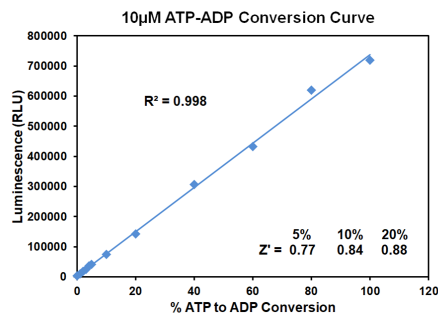


Figure 2. Linearity of the ADP-Glo Kinase Assay. ATP-to-ADP conversion curve was prepared at 10µM ATP+ADP concentration range. This standard curve is used to calculate the amount of ADP formed in the kinase reaction. Z' factors were determined using 200 replicates of each of the % conversions shown.



ADP-Glo™ Kinase Assay Application Note Tyrosine Kinase Series

The following is only a short protocol. For detailed protocols on conversion curves, kinase assays and inhibitor screening, see Kinase Enzyme Systems Protocol at: <http://www.promega.com/KESProtocol>

Short Protocol

- Dilute enzyme, substrate, ATP and inhibitors in 1x kinase reaction buffer.
- Add to the wells of 384 low volume plate:
 - ✓ 1 μ l of inhibitor or (5% DMSO)
 - ✓ 2 μ l of enzyme (defined from table 1)
 - ✓ 2 μ l of substrate/ATP mix
- Incubate at room temperature for indicated time (See Figure 3).
- Add 5 μ l of ADP-Glo™ Reagent.
- Incubate at room temperature for 40 minutes.
- Add 10 μ l of Kinase Detection Reagent.
- Incubate at room temperature for 30 minutes.
- Record luminescence (Integration time 0.5-1 second).

Table 1. Enzyme Titration. Data are shown as relative light units (RLU) that directly correlate to the amount of ADP produced. The correlation between the % of ATP converted to ADP and corresponding signal to background ratio is indicated for each kinase amount.

Enzyme, ng	25	12.50	6.25	3.13	1.56	0.78	0
Luminescence	291,485	109,872	54,863	27,076	15,432	9,487	4,594
S/B	63	24	12	6	3	2	1
% Conversion	46	17	8	3	1	1	0

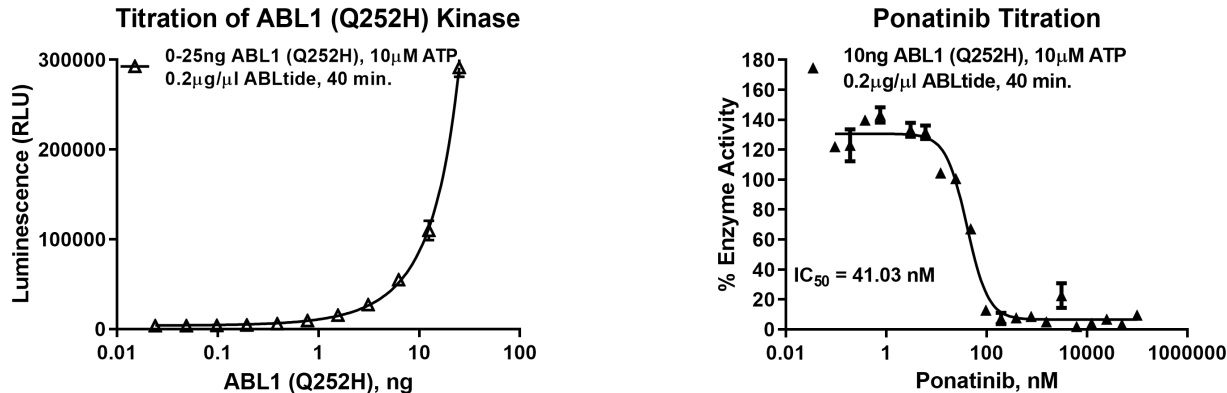


Figure 3. ABL1 (Q252H) Kinase Assay Development. (A) ABL1 (Q252H) enzyme was titrated using 10 μ M ATP and the luminescence signal generated from each of the amounts of the enzyme is shown. (B) Inhibitor dose response was created using 10ng of ABL1 (Q252H) to determine the potency of the inhibitor (IC₅₀).



Ordering Information:

Products	Size	Cat. #
ABL1 (Q252H) Kinase Enzyme System	10 μ g	VA7009
	1mg	VA7010
ADP-Glo™ + ABL1 (Q252H) Kinase Enzyme System	1 Each	VA7011